

Monthly Donations:

What is the Impact?

Branch Schools

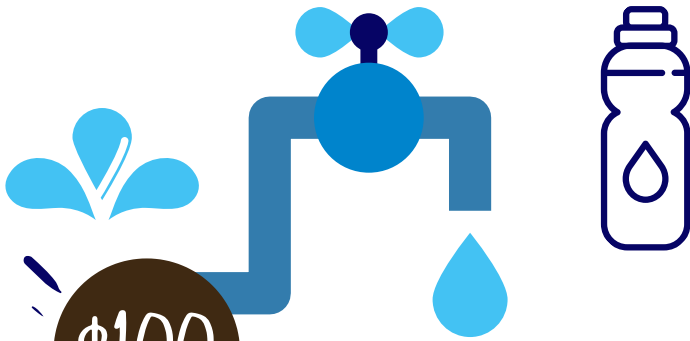
\$15

Full cost of attendance for 1 student



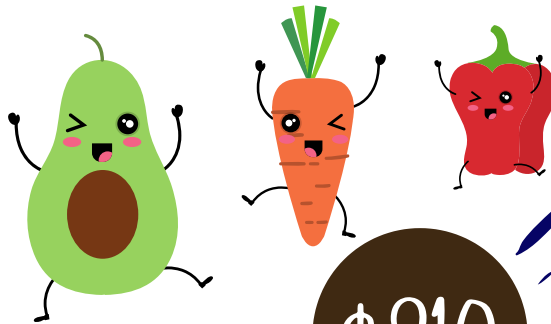
\$25

Cistern water for 85 students



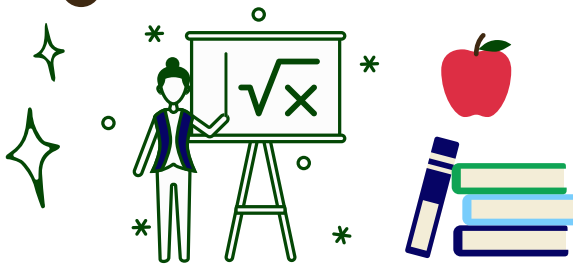
\$100

Healthy meals every day for 5 children



\$210

1 teacher's salary



**Branch Lutheran
Schools of Haiti**

Thank You!



www.branchlutheranschoolshaiti.org
[@BranchLutheranSchoolsHaiti](https://www.facebook.com/BranchLutheranSchoolsHaiti)
info@branchlutheranschoolshaiti.org